

Light Sensor Calibration

Download
Calibration
Program

- In NXT-G, click Tools > Calibrate Sensors (*figure 1*)
- Select "Light Sensor" (*figure 2*)
- Select port number (i.e. "3") (*figure 2*)
- Click "Calibrate" (*figure 2*)

Calibrate Sensor

- Run program (*not shown*)
- Place sensor over black and press enter (*figure 3*)
- Place sensor over white and press enter (*figure 4*)

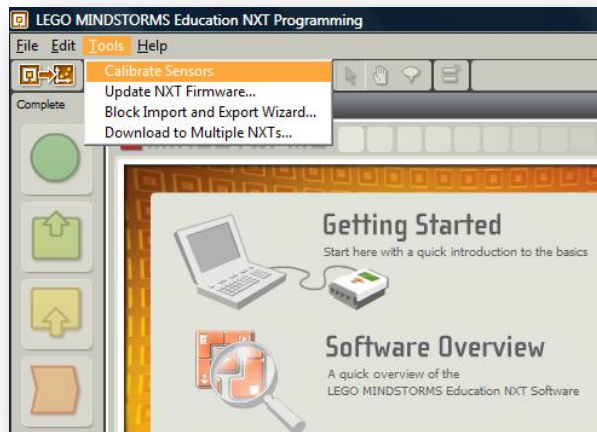


Figure 1: Open "Calibrate Sensors"

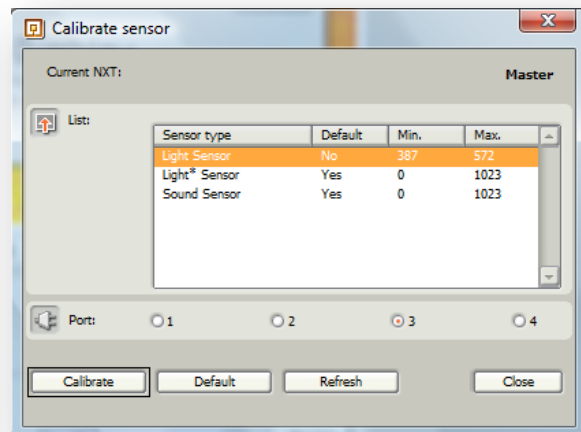


Figure 2: Calibrate Sensor Dialog



Figure 3: Position over black and press enter



Figure 4: Position over white and press enter